

## CASE STUDIES

### Case Study 1

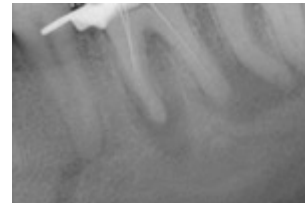
#### Preoperative 4-4-94

The patient presented with chief complaint of a bad taste and was referred for 2 teeth that needed endodontic therapy. A sinus tract was noted on the buccal surface of #18. #18 and 19 were sensitive to percussion, palpation and chewing pressure. All teeth were responsive to CO2 ice except for #19. Tracing the sinus tract led to the periapical area of tooth #19. A decision was made to treat #19 and monitor #18 for possible need for future treatment.



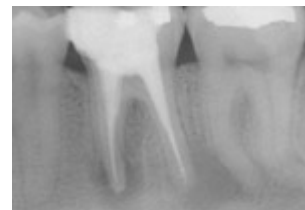
#### Intraoperative 4-4-94

Access to all four canals was achieved and working length was determined. The canals were instrumented to ISO 40, irrigated dried and filled with Ca(OH)<sub>2</sub>.



#### Postoperative 4-26-94

The patient returned for completion of treatment. The canals were rinsed dried and the canals were obturated with gutta percha using lateral condensation. The patient was asked to proceed with the restoration ASAP with his general dentist and to return for six and 12 month recalls.



#### 12 Month Recall 5-16-95

The patient presented for a recall. The sinus tract had not returned and #18, 20 and 21 were responding within normal limits to CO2 ice. The radiograph demonstrated excellent healing in the periapical area. The patient was advised that no further endodontic treatment was advised for this area at this time. The patient was referred back to his general dentist for continued general dental care.

